

FAMOUS PLACES
DOWNTOWN HIGH RIVER



Share your High River experience!
#ExperienceHighRiver

choosehighriver.ca



FSC
symbol for
printer to
place

HIGH RIVER

explore

FAMOUS PEOPLE, FAMOUS PLACES



Walk, bike or ride
to see the sites.

In addition to being the Official Home of Heartland®, High River has had many brushes with pop-culture. Locations around town have been featured in several well-known film and television productions. For complete details, please visit www.choosehighriver.ca

JASON GLASS
CHUCKWAGON DRIVER, STUNTMAN

Highlights to make your visit great!



Heartland & Fargo

The long-running CBC television series *Heartland* is filmed here, leading to the Town's proud designation of "High River – Home of Heartland". Many other film and series scenes have been filmed in and around High River, including the Emmy and Golden Globe award winning series *Fargo*.



Heartland & High River Souvenirs

Heartland High River souvenir merchandise is available exclusively at local businesses and the Museum of the Highwood.



Frank Lake Conservation Area

Birdwatchers at Frank Lake Conservation Area, located 8 km east of High River off Hwy 23 have recorded sighting more than 195 species of birds, including Trumpeter and Tundra Swans.



George Lane Park

George Lane Park is home to hundreds of mature trees, 57 individual campsites—each with 15- and 30-amp power, fire pit and picnic table—and within walking distance of numerous festivals throughout the year.

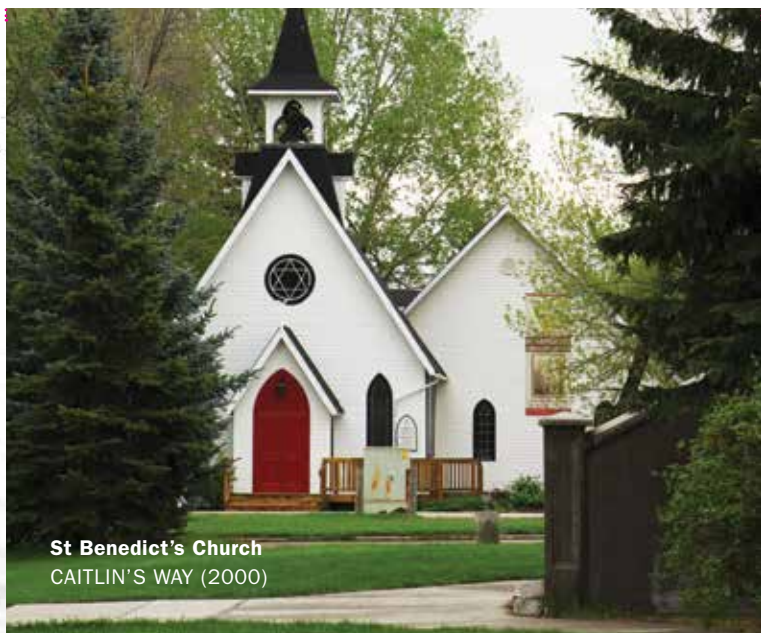


Excellent Eats

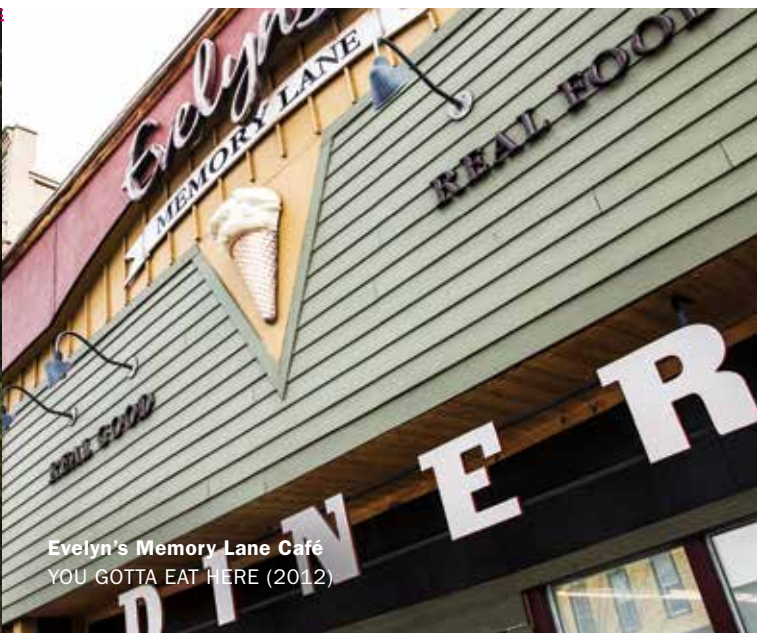
Chow down at one of the many excellent restaurants in High River. Try the Whistle Stop Café, a refurbished dining car that hasn't rolled down the tracks in decades! The restaurant has been open since 1992 and has become one of the places that locals rave about. Reservations recommended.



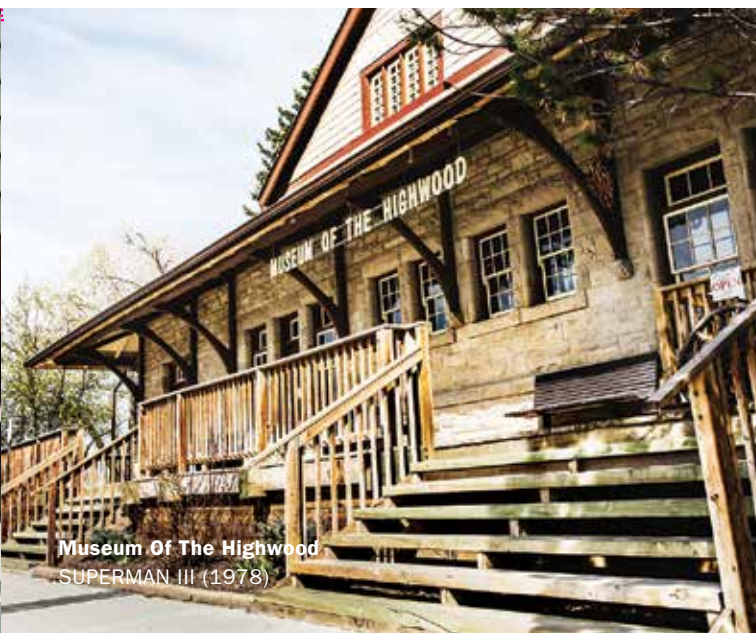
TED DAWSON, SANTA CLAUS PARADE



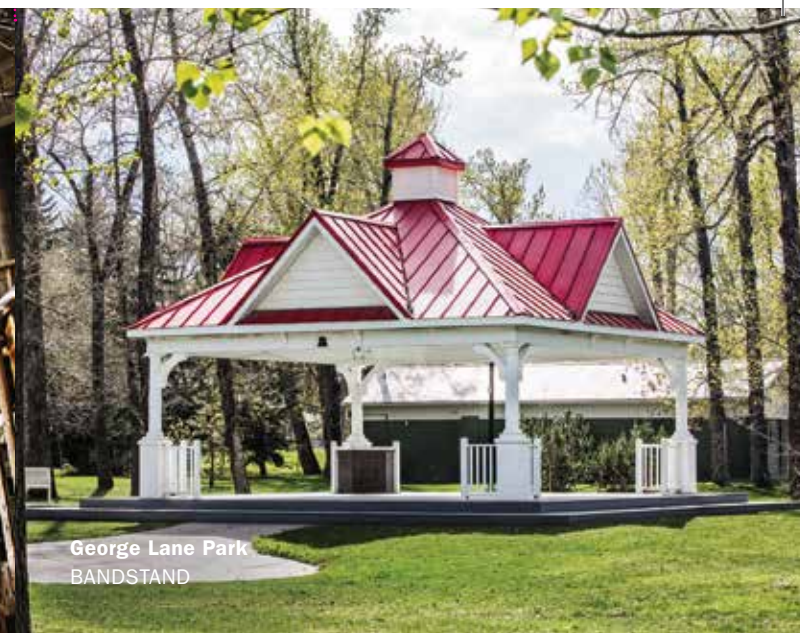
St Benedict's Church
CAITLIN'S WAY (2000)



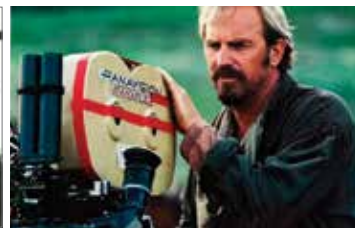
Evelyn's Memory Lane Café
YOU GOTTA EAT HERE (2012)



Museum Of The Highwood
SUPERMAN III (1978)



George Lane Park
BANDSTAND



Famous people, famous places.

High River has stood in as the backdrop for many major film and television shows, starring famous actors from around the world.

1 Museum of the Highwood & Whistle Stop Café

- *Silver Streak* (1976), *Superman III* (1983), *Heartland* (2007–), *Tin Star* (2016 –)
- Kevin Costner dined at the Whistle Stop Café while filming *Open Range* (2003).

2 Happy Trails Trail System

- 28 km of walking and biking trails that wind their way around High River.
- Author W. O. Mitchell often sought inspiration on the Highwood River, along the present-day Happy Trails route.

3 High River Motel

- *Heartland* (SE2)
- *Fubar* (2002)
- *Fargo* (SE2)

4 Spitzee School

Stood in for Smallville School in *Superman 3* (1983).

5 Corner of 4th Ave SW & 1st St SW (CIBC & Western Financial Group)

- *Ron Clarke Story* (2006)
- *Heartland* (SE4)
- *Fargo* (SE1) – Mr. Numbers (Adam Goldberg), signs to Mr. Wrench (Russell Harvard) following a fender bender.

6 St. Benedict's Church

Caitlin's Way (2000)

7 Rotary Park

George Emerson Sculpture – He personified the adventurous spirit, tenacity and honesty of our pioneers who were willing to take risks and grow this area.

8 4th Avenue Streetscape

- *Fargo* (SE1)
- *Heartland* (SE4) – In September 2010, 4th Ave SW was closed for a scene that featured more than 30 head of cattle being driven down the street.

9 Maggie's Diner & Alley

- Maggie's Diner is *Heartland's* only publicly accessible film set.
- *Fargo* SE1's notorious blizzard scene was filmed in the alley behind Maggie's Diner.

10 Evelyn's Memory Lane Café

- *Caitlin's Way* (2000)
- *You Gotta Eat Here* (2012)
- *Noah* (1998) – The space was converted to an old-fashioned diner for the made-for-television film *Noah*, and has remained as an authentic diner ever since.

11 Wales Theatre

- Clint Eastwood used the historic Wales Theatre to watch his dailies while filming *Unforgiven* in 1991-2.
- Heritage Minute: Viola Desmond (2016), Historical Canada.

12 Golden National Restaurant

Jackie Chan dined here while filming *Shanghai Noon* (2000).

13 Carlson's on MacLeod

Heartland (SE7) - Former High River Mayor Emile Blokland appeared as Mayor of "Hudson" (2012).

14 George Lane Park

Heartland (SE5)

15 TD Bank

Heartland (SE2-3)

16 CIBC Parking Lot/Highwood Art Gallery

Superman III (1983)

George Lane Park: High River's most hidden gem

George Lane Park is set in a secluded area beside the Highwood River, close to unique downtown High River, Alberta, Canada. This campground is 60 Km (35 miles) south of Calgary on Highway 2, within easy walking distance of shopping and restaurants.

Among hundreds of mature trees, there are 57 individual, roomy campsites (pull-through and back-in), each with 15 and 30 amp power, a fire pit and a picnic table. The washrooms are well maintained with free, very clean showers. Portable water and a free sani-dump are available within the campground and adjoining park.

George Lane Memorial Park & Campground

403.652.2529 | camping@georgelanecampground.ca
RESERVATIONS TAKEN FROM APRIL TO SEPTEMBER